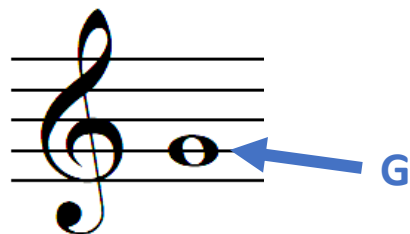


The Treble Clef

Name: _____

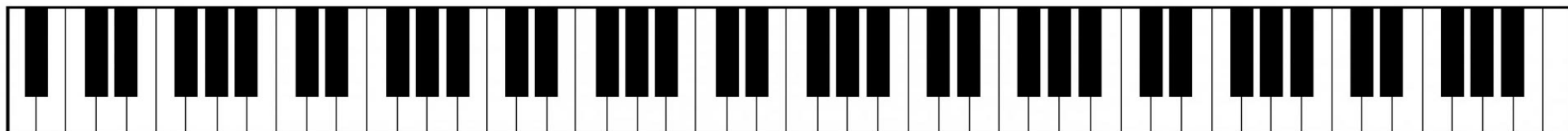
Clef means key and **treble** means high. The **treble clef** is our key to knowing which note is on which line or space of the staff for high notes. We use the **treble clef** for notes above middle C on the piano.

Usually the right hand plays notes in the **treble clef**.

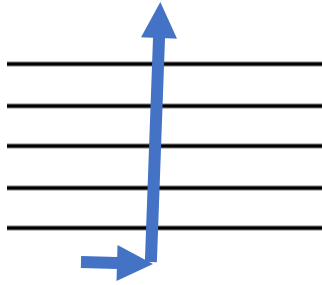


Sometimes the **treble clef** is called the **G clef** because it swirls around the note **G**.

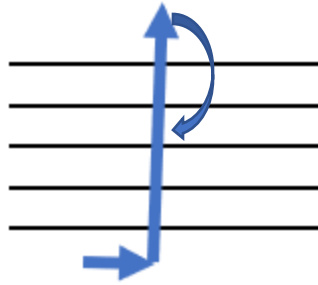
The **treble clef** looks like a very fancy **G**.



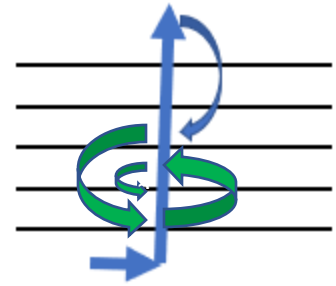
To draw a **treble clef** start by drawing a hockey stick



Then loop around the top and cross your first line at the middle



Then swirl around the G line



Complete these **treble clefs**

