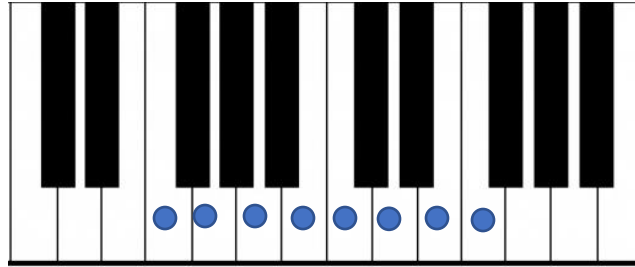
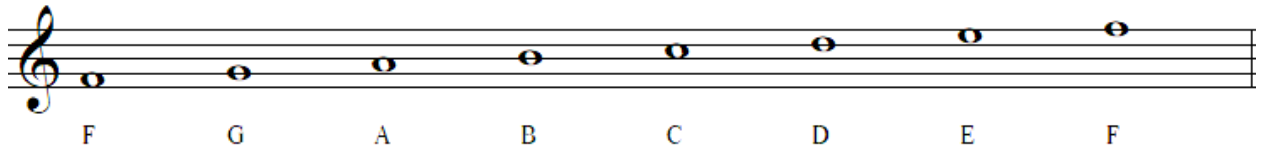


# Lydian Mode



Play the **Lydian** mode using the white keys on the piano from E to E.

Play the beginning of *Twinkle Twinkle Little Star* in **Ionian (major)** and then in **Lydian**.

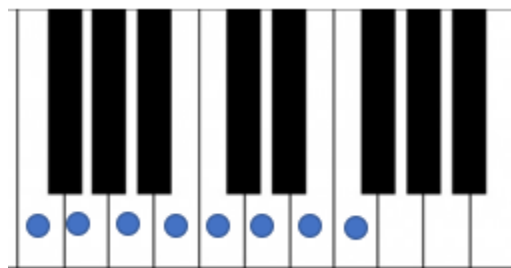
Ionian (major)

Lydian



Learn to play the **Lydian Mode Song**.

The Ly - di - an mode, is light and some - times seems like  
a ma - jor key, yet it can have a wist - ful long - ing

Does the **Lydian** mode give you a different feeling from the **major** or **minor** scale?



Mark the **tones** and **semitones** on the keyboard picture of the **Lydian** mode.

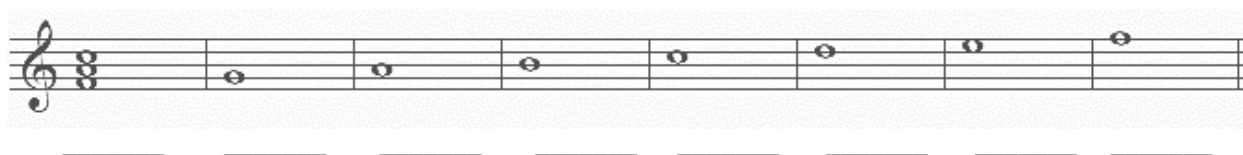
Use  for **tones** and  for **semitones**.

Fill in the chart to show the pattern of intervals in the **Lydian** mode

	Bottom <b>Tetrachord</b>			Joining Interval	Top <b>Tetrachord</b>		
<b>Tone or Semitone</b>							

Build **triads** on each note of the **Lydian** mode.

Play the **triads** and identify them as **major (+)**, **minor (-)** or **unsure (?)**.



### Composition/Improvisation:

Try out the **Lydian** mode for yourself by making up some music using *Questionable*.

**Repertoire:** Learn to play one of these songs

- ☐ *Chopin Mazurka excerpt*
- ☐ *St Magnus Hymn*
- ☐ *Flowing Down the River*
- ☐ *Through the Frost Covered Window*
- ☐ Your Choice from *In The Mood For Modes* books \_\_\_\_\_

### Composition/Improvisation:

Work on the *Triads in Lydian* experiments,